

\$479,900 - 118 Corvette Crescent S, Lethbridge

MLS® #A2219295

\$479,900

4 Bedroom, 2.00 Bathroom, 1,146 sqft

Residential on 0.13 Acres

Glendale, Lethbridge, Alberta

Don't miss this rare opportunity just two blocks from Henderson Lake Park in the highly sought-after Southside neighborhood of Corvette Crescent! This 4-bedroom, 2-bathroom home offers over 1,110 sq. ft. of living space with a functional floor plan.

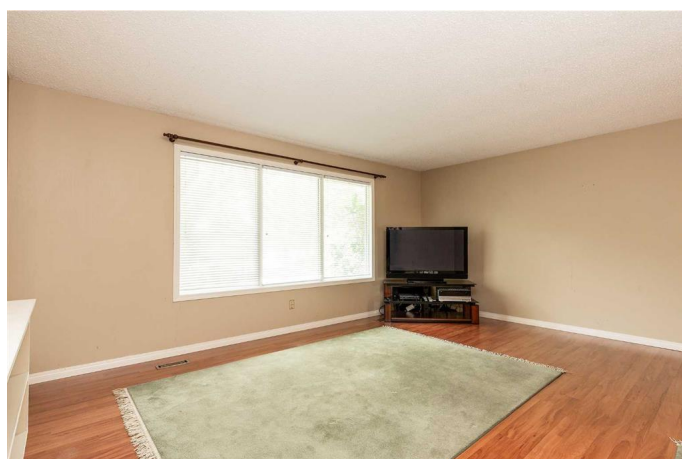
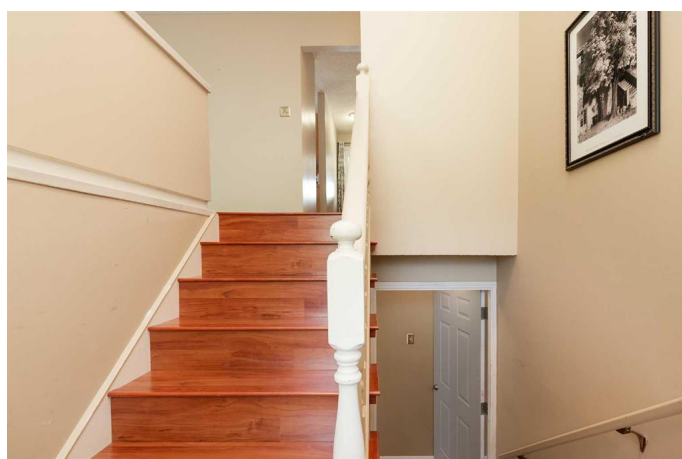
The home features a convenient basement entry, along with a second kitchen and laundry area—ideal for multi-generational living or added flexibility. Both bathrooms have been recently updated with new tubs and tile for a fresh, modern touch. Enjoy the privacy of your own backyard, plus ample parking with a front driveway and carport. All appliances are included, making this move-in-ready home even more appealing.

Properties in this desirable location rarely come available—contact your REALTOR® today to book a showing!

Built in 1977

Essential Information

MLS® #	A2219295
Price	\$479,900
Bedrooms	4
Bathrooms	2.00
Full Baths	2
Square Footage	1,146
Acres	0.13



Year Built	1977
Type	Residential
Sub-Type	Detached
Style	Bi-Level
Status	Active

Community Information

Address	118 Corvette Crescent S
Subdivision	Glendale
City	Lethbridge
County	Lethbridge
Province	Alberta
Postal Code	T1J 3X7

Amenities

Parking Spaces	2
Parking	Attached Carport

Interior

Interior Features	Storage
Appliances	Refrigerator, Washer/Dryer
Heating	Forced Air
Cooling	None
Has Basement	Yes
Basement	Finished, Full

Exterior

Exterior Features	None
Lot Description	Back Yard, Landscaped
Roof	Flat Torch Membrane
Construction	Brick, Stucco, Vinyl Siding
Foundation	Poured Concrete

Additional Information

Date Listed	May 23rd, 2025
Days on Market	9
Zoning	R-L

Listing Details

Data is supplied by Pillar 9â„¢ MLSÂ® System. Pillar 9â„¢ is the owner of the copyright in its MLSÂ® System. Data is deemed reliable but is not guaranteed accurate by Pillar 9â„¢. The trademarks MLSÂ®, Multiple Listing ServiceÂ® and the associated logos are owned by The Canadian Real Estate Association (CREA) and identify the quality of services provided by real estate professionals who are members of CREA. Used under license.