

# \$649,000 - 410, 930 16 Avenue Sw, Calgary

MLS® #A2215917

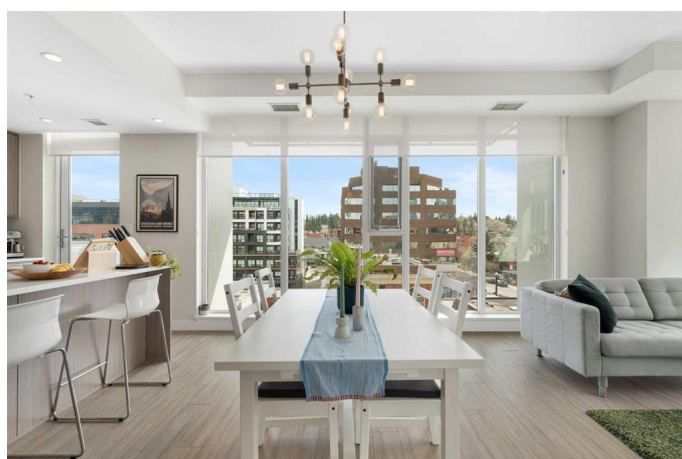
**\$649,000**

2 Bedroom, 2.00 Bathroom, 922 sqft

Residential on 0.00 Acres

Beltline, Calgary, Alberta

Welcome to this amazing 2-bedroom 2-bathroom condo in Calgary's iconic Royal building, elevated above historic Mount Royal Village West and one block from the local shops, cafes and culinary delights along 17th Avenue district. With sophisticated craftsmanship and carefully curated finishings, the space exudes a feeling of modern contemporary living complemented by vinyl plank wood floors and high 9 foot ceilings. Enjoy your dream kitchen with gleaming quartz countertops, custom built-ins, a gas range, and a sleek kitchen island ideal for everyday living and entertaining. Both the refrigerator and dishwasher are integrated into the cabinetry for an ultra minimalist look. Natural light floods the dining and living area from south facing floor-to-ceiling windows. Take a moment outside on your sunny balcony to enjoy the beautiful view of lower Mount Royal and beyond! Enter your cozy primary bedroom complete with walk-in closet and luxurious ensuite, designed with ultimate comfort in mind featuring in-floor heating, double vanities, and a glass shower. A second generously sized bedroom and second 4-piece bathroom complete the space. The unit comes equipped with in-suite laundry, central A/C, one assigned storage locker conveniently located on the same floor, one assigned underground parking spot, and full access to the Royal's incomparable building amenities. A state-of-the-art 24/7 fitness centre, squash court, steam room & sauna, rooftop terrace,



and social room are located on the 5th floor allowing for true luxury living! The Royal is an exceptionally well-managed building with an inviting 24/7 concierge, secure parking, secure bike storage, and is pet-friendly. Schedule your private viewing today to see this property in person.

Built in 2019

### Essential Information

MLS® #	A2215917
Price	\$649,000
Bedrooms	2
Bathrooms	2.00
Full Baths	2
Square Footage	922
Acres	0.00
Year Built	2019
Type	Residential
Sub-Type	Apartment
Style	Single Level Unit
Status	Active

### Community Information

Address	410, 930 16 Avenue Sw
Subdivision	Beltline
City	Calgary
County	Calgary
Province	Alberta
Postal Code	T2R 1C2

### Amenities

Amenities	Bicycle Storage, Elevator(s), Fitness Center, Game Court Interior, Park, Parking, Party Room, Picnic Area, Roof Deck, Secured Parking, Snow Removal, Storage, Trash, Visitor Parking, Racquet Courts, Recreation Facilities, Recreation Room, Sauna, Spa/Hot Tub
Parking Spaces	1
Parking	Underground, Assigned

## Interior

Interior Features	Built-in Features, Double Vanity, High Ceilings, Kitchen Island, Quartz Counters, Walk-In Closet(s)
Appliances	Built-In Refrigerator, Dishwasher, Microwave, Range Hood, Washer/Dryer Stacked, Gas Range, Oven
Heating	Forced Air
Cooling	Central Air
# of Stories	34

## Exterior

Exterior Features	Balcony
Construction	Concrete, Metal Siding

## Additional Information

Date Listed	May 5th, 2025
Days on Market	14
Zoning	DC

## Listing Details

Listing Office	Rentch Real Estate
----------------	--------------------

Data is supplied by Pillar 9â„¢ MLS® System. Pillar 9â„¢ is the owner of the copyright in its MLS® System. Data is deemed reliable but is not guaranteed accurate by Pillar 9â„¢. The trademarks MLS®, Multiple Listing Service® and the associated logos are owned by The Canadian Real Estate Association (CREA) and identify the quality of services provided by real estate professionals who are members of CREA. Used under license.