

\$769,900 - 143 Belvedere Crescent Se, Calgary

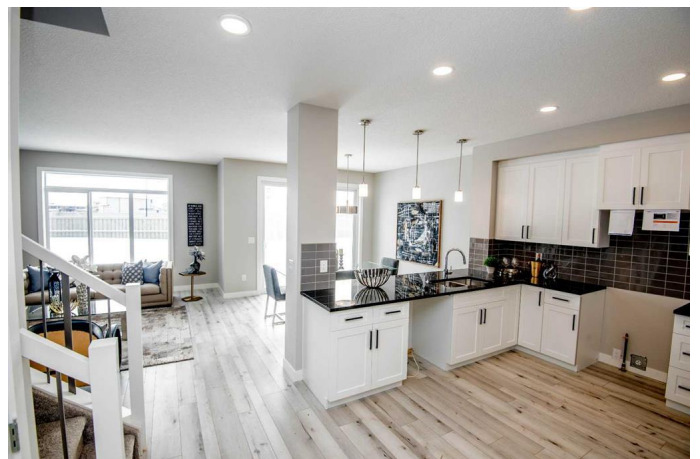
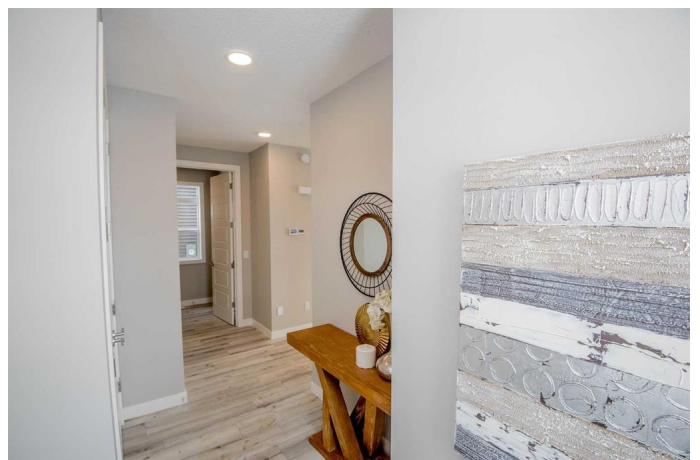
MLS® #A2200415

\$769,900

4 Bedroom, 3.00 Bathroom, 1,912 sqft
Residential on 0.08 Acres

Belvedere., Calgary, Alberta

Welcome to this stunning new build by Crystal Creek Homes, the Alder model, which offers the perfect blend of modern style and thoughtful practicality. This home features a double front-attached garage and a beautifully landscaped front yard with a tree and up to three shrubs, enhancing its curb appeal. Inside, you'll find soaring high ceilings and an open-concept floor plan that allows for effortless flow and an abundance of natural light. The spacious living area is highlighted by a cozy gas fireplace, providing warmth and comfort. The chef's kitchen is a true centerpiece, complete with a large kitchen island, a pantry for added storage, and high-end finishes throughout. The mudroom offers a convenient transition from the garage, while the prep kitchen provides additional space for cooking and organization. Step outside to the pressure-treated deck, perfect for outdoor entertaining or relaxing while enjoying the east-facing views of the backyard. This home is ideally located near the upcoming new elementary school and the East Hills Commercial Centre, with easy access to Costco, Walmart, movie theater, and rapid transit to downtown Calgary. Don't miss the opportunity to make this brand-new home yours! This home is currently under construction and will be complete in the summer 2025. These photos were taken from an exact Alder home design built in another neighbourhood. Please visit the show home at 272 Belvedere Drive to view similar built home



and get permission for site visit of this address.

Monday - Thursday 2-8 pm and Saturday -

Sunday 12- 5 pm.

Built in 2025

Essential Information

MLS® #	A2200415
Price	\$769,900
Bedrooms	4
Bathrooms	3.00
Full Baths	2
Half Baths	1
Square Footage	1,912
Acres	0.08
Year Built	2025
Type	Residential
Sub-Type	Detached
Style	2 Storey
Status	Active

Community Information

Address	143 Belvedere Crescent Se
Subdivision	Belvedere.
City	Calgary
County	Calgary
Province	Alberta
Postal Code	T2A 7M5

Amenities

Parking Spaces	4
Parking	Double Garage Attached
# of Garages	2

Interior

Interior Features	Breakfast Bar, Closet Organizers, Double Vanity, Open Floorplan, Pantry, Vaulted Ceiling(s), Walk-In Closet(s)
Appliances	Dishwasher, Dryer, Garage Control(s), Refrigerator, Stove(s), Washer
Heating	Forced Air, Natural Gas

Cooling	None
Fireplace	Yes
# of Fireplaces	1
Fireplaces	Gas
Has Basement	Yes
Basement	Full, Unfinished

Exterior

Exterior Features	None
Lot Description	Landscaped
Roof	Asphalt Shingle
Construction	Composite Siding, Wood Frame
Foundation	Poured Concrete

Additional Information

Date Listed	March 11th, 2025
Days on Market	28
Zoning	TBD

Listing Details

Listing Office	eXp Realty
----------------	------------

Data is supplied by Pillar 9â„¢ MLSÂ® System. Pillar 9â„¢ is the owner of the copyright in its MLSÂ® System. Data is deemed reliable but is not guaranteed accurate by Pillar 9â„¢. The trademarks MLSÂ®, Multiple Listing ServiceÂ® and the associated logos are owned by The Canadian Real Estate Association (CREA) and identify the quality of services provided by real estate professionals who are members of CREA. Used under license.